

Configuring N1MM+ and Writelog for live score posting for the NA College Championship

Pizza Lovers 259 – January 8, 2019

The LATEST versions of N1MM and Writelog have the ability to post your scores to the Internet. PL259 has developed a simple web server to accept your posted scores and display them as a results table for the NA College Championship

At the moment, these are the only two logging programs which support score posting.

This note assumes that either N1MM+ or Writelog is already installed on a computer that will be used for logging during the contest. It shows you how to configure your logging program to participate in the Challenge.

If you need help beyond this note, please email Stu K6TU at stu@k6tu.net.

PLEASE BE SURE THAT YOU HAVE THE LATEST N1MM+ OR WRITELOG INSTALLED ON YOUR COMPUTER AS THE **VERY FIRST** STEP.

Please take the time to install, configure and test the logging software from your station location BEFORE the contest begins. It is important to test from your station location to make sure that Internet access works as you expect.

WHEN YOU HAVE EVERYTHING CONFIGURED FOR THE CONTEST, REMEMBER TO FOLLOW THE STEP TO START SCORE REPORTING – ESPECIALLY WHEN RESTARTING YOUR LOGGING PROGRAM.

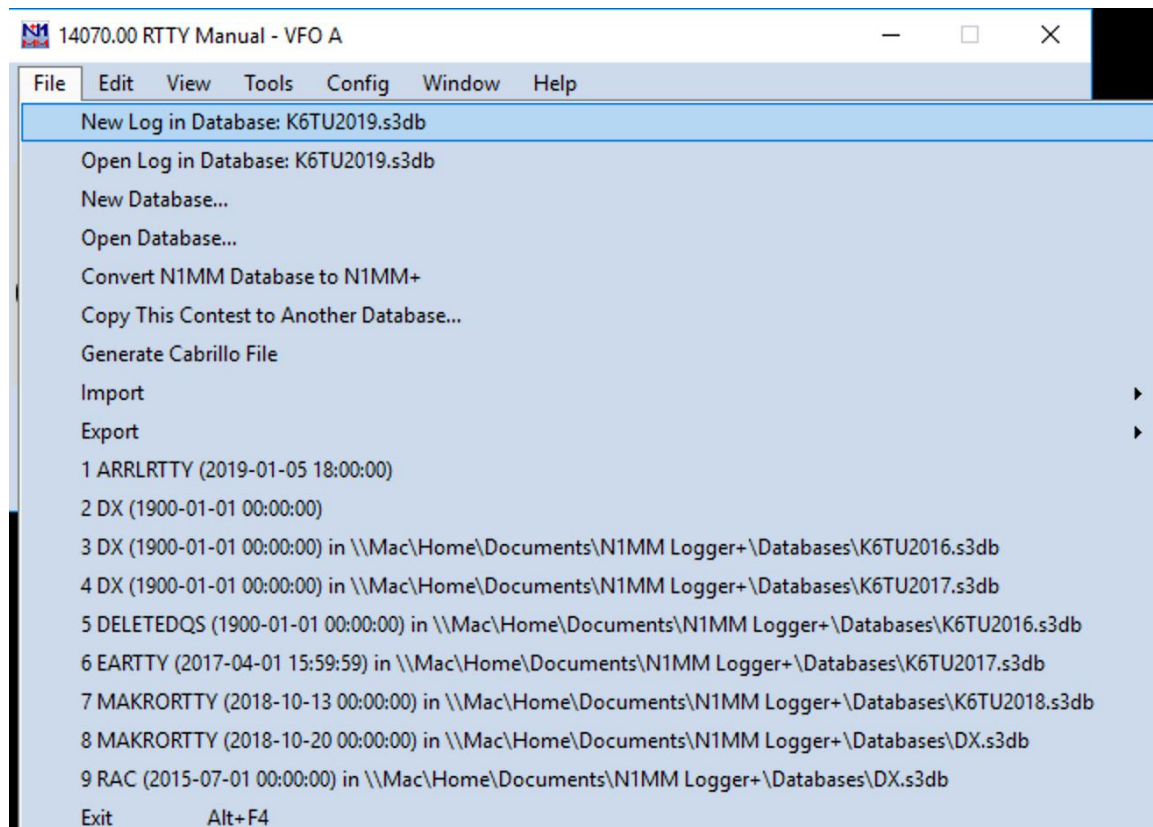
Step 1 – Configure your logging program

This step shows you how to configure your logging program – first for N1MM+ and second for Writelog – use the section appropriate to your logger.

N1MM+

As a reminder, when starting a new contest, you need to configure N1MM+ so that it knows the contest in which you will participate.

From the menu bar, select “New Log in Database...” – your database name will be different than the one shown in the following screen shot:



Click on the “New Log in...” menu item and N1MM+ will present you with a list of supported contests.

New log for: North American QSO Parties - SSB

Log Type
Start Date

Contest

Category
Operator
Band
Power
Mode
Overlay

Note - the program does not validate categories. Check the contest rules for valid categories.

State for Log Type QSOPARTY

Sent Exchange Omit RST. E.g. CQWW: 05 SS: A 56 EMA
Operators
Soapbox

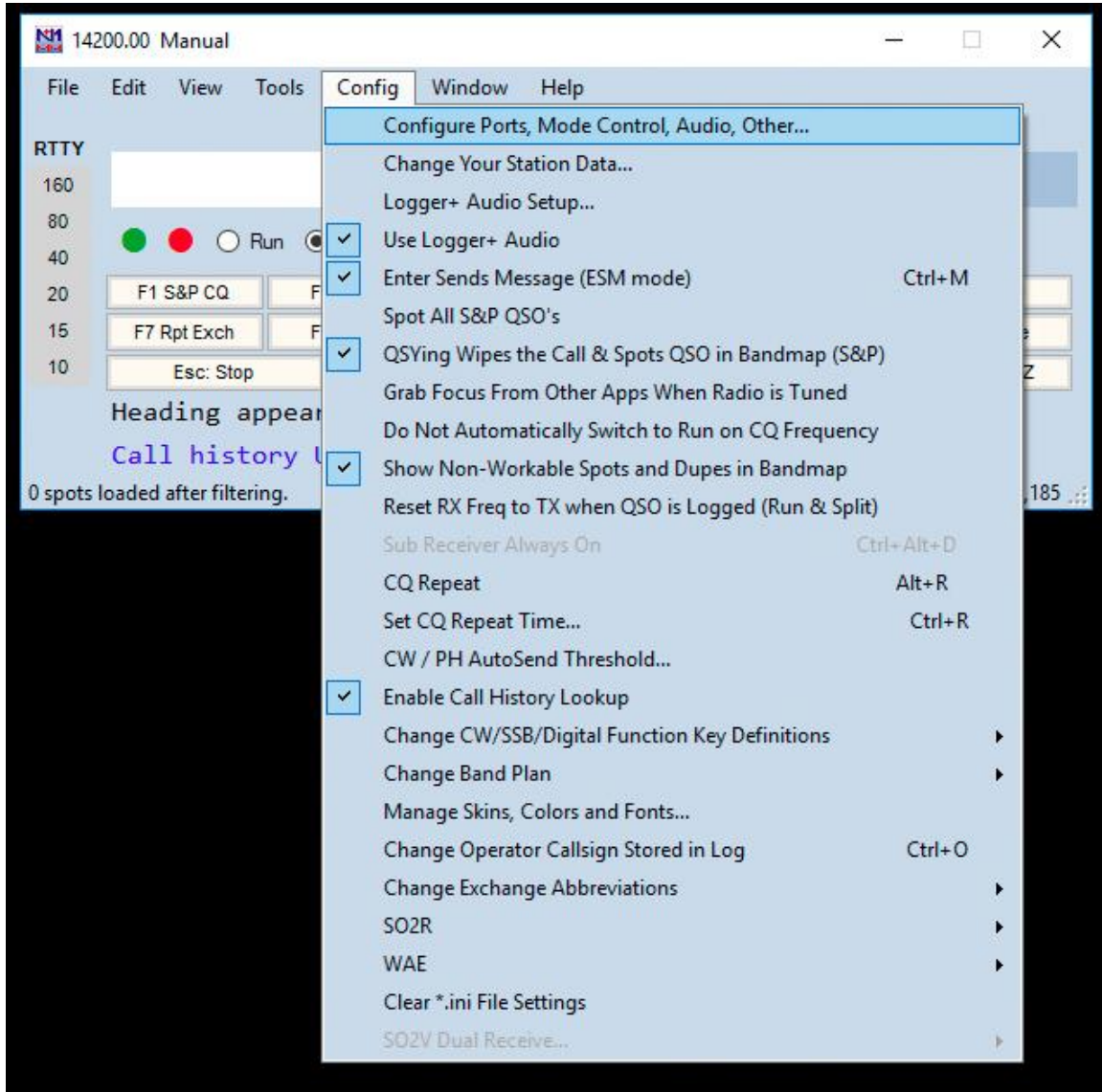
For the NAQP-SSB contest starting on January 19th, 2019 – select NAQPSSB.

For the NAQP-RTTY contest starting on February 23rd, 2019 – select NAQPRTTY.

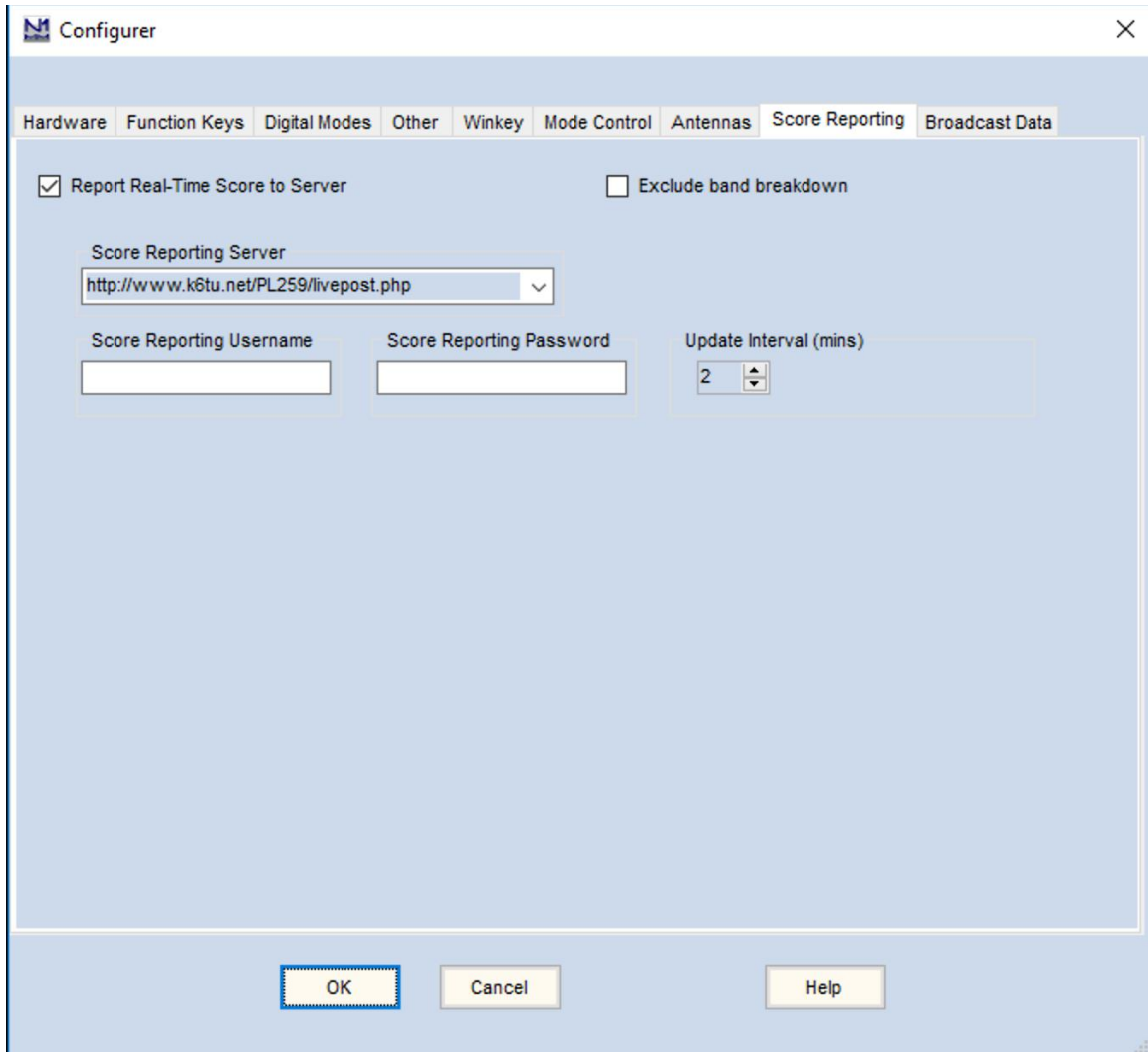
Configure the other fields appropriate to your station entry with particular attention to the Operator and Sent Exchange fields. Remember that all NAQP contest are LOW power (100 watts maximum).

Configure Score Posting

Start N1MM+ and on the menu bar, click on Config and select “Configure Ports, Mode Control, Audio, Other” – it’s the first menu item at the top of the list...



Now click on the “Score Reporting” tab...



Click on the check box “Report Real-Time Score to Server”.

In the field “Score Reporting Server” enter:

<http://www.k6tu.net/PL259/livepost.php>

IMPORTANT: This URL is CaSE SensITiVe!!!!

Click on OK.

At any time before the contest, you can test that you have correctly configured N1MM+ by creating some fake QSO entries in your log.

In the log you have created for the NAQP contest, complete the entry information required in the Contest form. Now click on OK. Enter some fake QSO's and then every 2 minutes, N1MM+ will post your score to the server.

You can visit the real-time score board at:

<http://www.k6tu.net/scores.php?callsign=YOURCALL>

Where YOURCALL is the call sign you registered via the NA School Championship sign up form on the PL259.ORG web site.

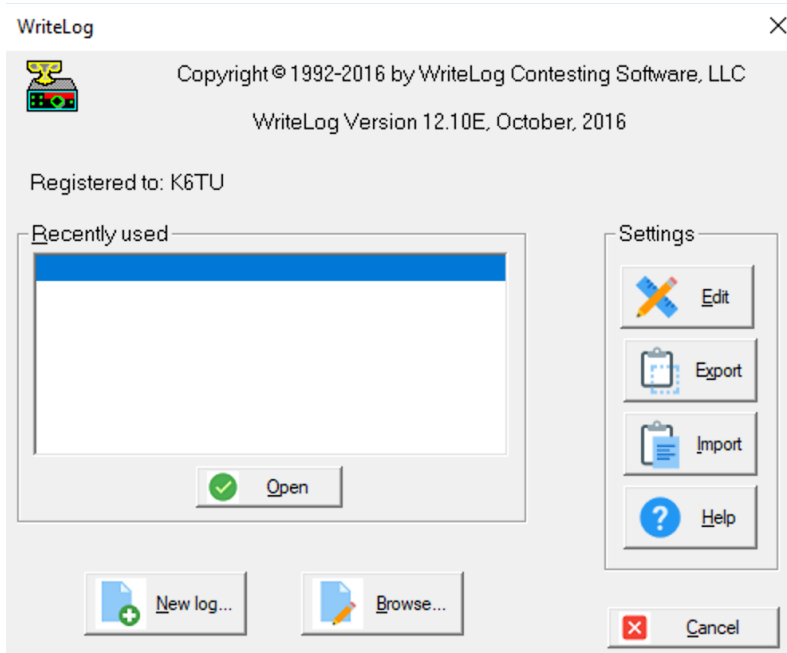
If you configured everything correctly, you will see a summary of scores for each school with your own score displayed in **BOLD** in the list.

Don't worry about the fake scores – the database will be reset before the contest begins.

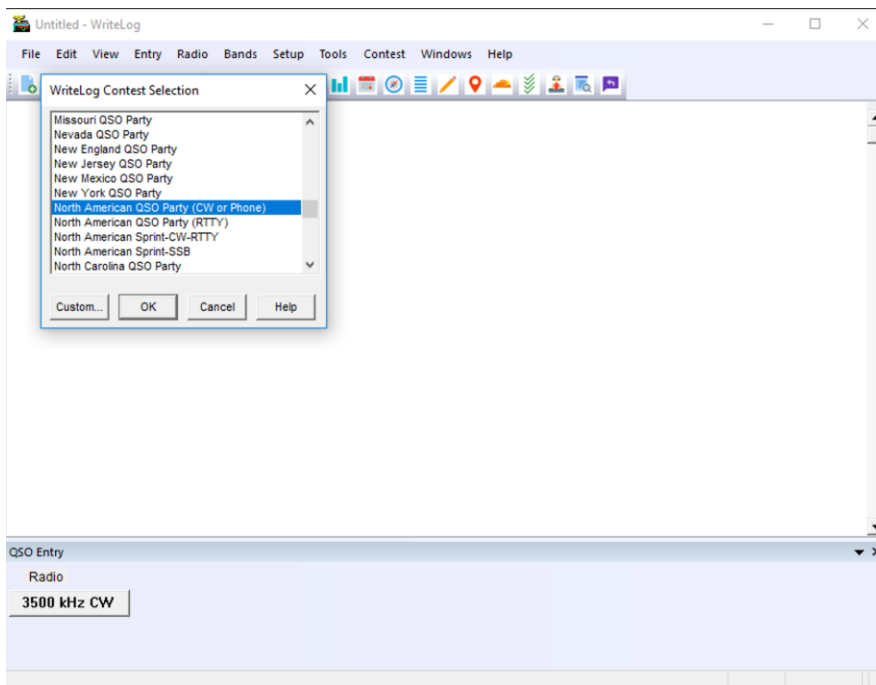
Do remember to delete the fake QSOs from your log before the contest begins!

WRITELOG

When starting Writelog, you will be presented with a screen that looks something like this:



Click on the "New log..." button.

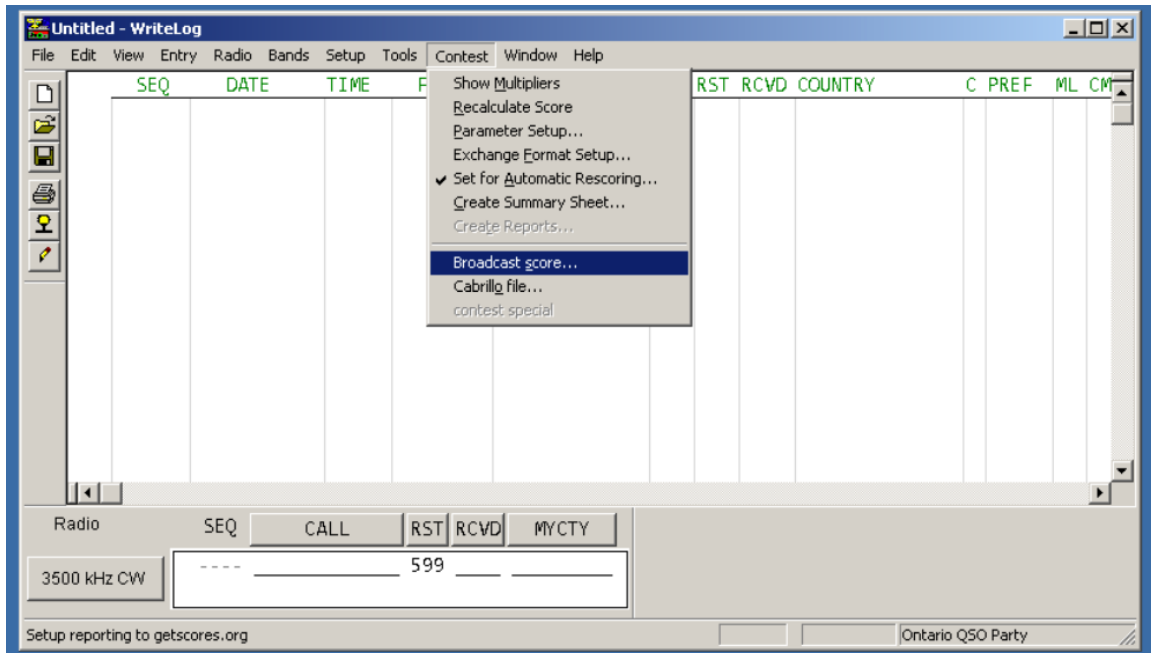


From the "Writelog Contest Selection" window, select:

For the NAQP-SSB contest starting on January 19th, 2019 – select “North American QSO Party (CW or Phone)”.

For the NAQP-RTTY contest starting on February 23rd, 2019 – select “North American QSO Party (RTTY)”.

Once you have configured the contest, click on the Contest Menu and select “Broadcast score...”



You will see a new window displayed that needs configuration as follows;

Log submission details

Call used: K6TU Location: SANTA CLARA VALLEY

Operator: SINGLE-OP Overlay: Station:

Power: LOW Xmtr: ONE Mode: RTTY Band: ALL

Assisted: NON-ASSISTED Time:

Club: Pizza Lovers 259

Calls of all operators: K6TU

State/Province: CA Country: USA

Network Address:
 UDP Port:

Password:

Active Contests:
 Upload:
 min

 post qso&mult breakdown also

First make sure that you configure Power, and Xmtr appropriate to your entry – these have to be set before Writelog will report your score.

Click on the tab “cqcontest.net Upload” and then enter the “Network Address” as:

<http://www.k6tu.net/PL259/livepost.php>

IMPORTANT: This URL is CaSE SensITiVe!!!!

Now set the Upload interval to “2” and check the box “post qso&mult breakdown also” – now click on Start.

The window will close and QSO reporting will be made every 2 minutes.

At any time before the contest, you can test that you have correctly configured Writelog by creating some fake QSO entries in your log.

Enter some fake QSO's and once Writelog has posted your score (it will take up to 2 minutes), visit the results web page at:

<http://www.k6tu.net/scores.php?callsign=YOURCALL>

Where YOURCALL is the call sign you registered via the NA School Championship sign up form on the PL259.ORG web site.

If you configured everything correctly, you will see a summary of scores for each school with your own score displayed in **BOLD** in the list.

Don't worry about the fake scores – the database will be reset before the contest begins.

Do remember to delete the fake QSOs from your log before the contest begins!